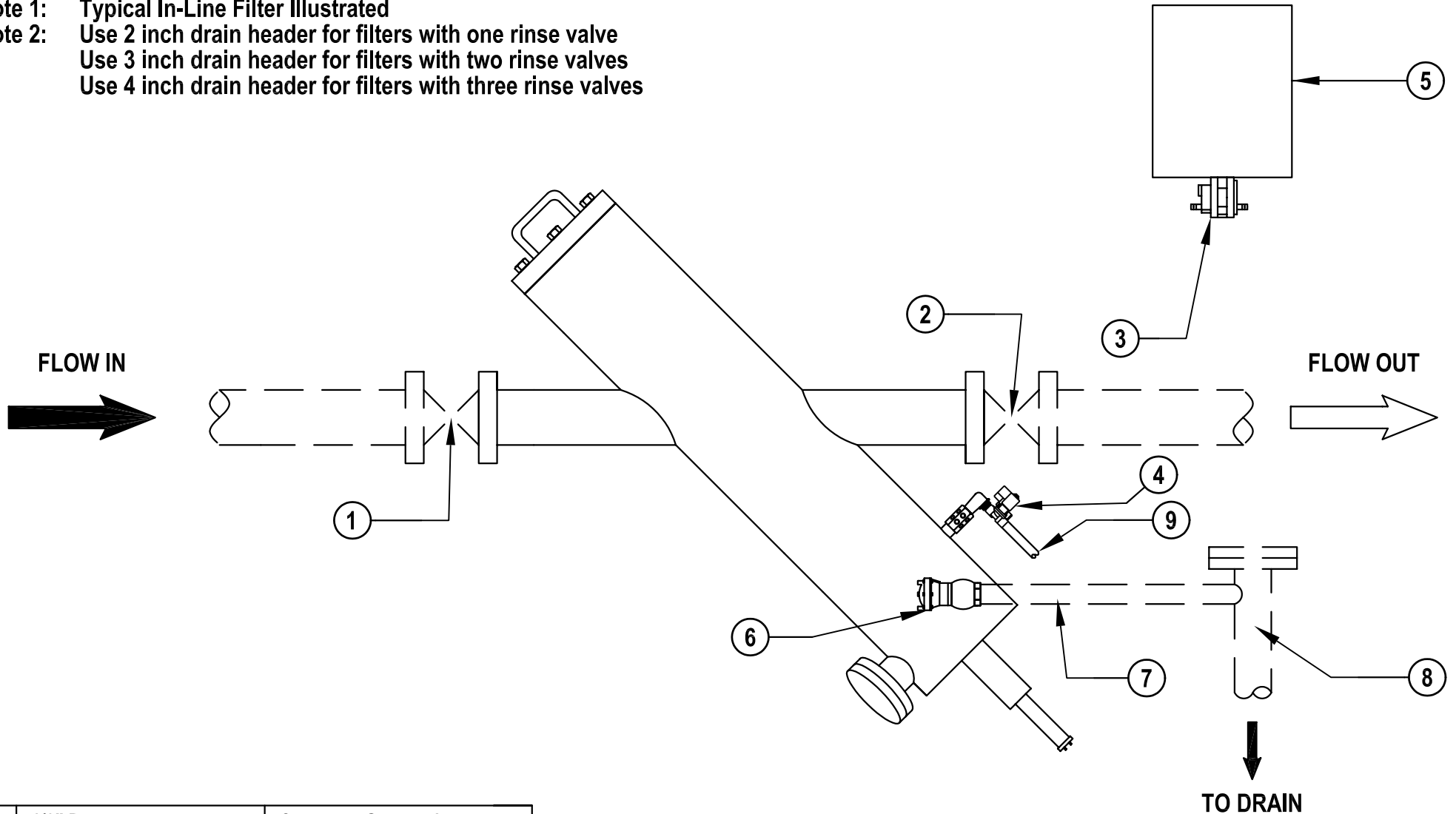


- Note 1:** Typical In-Line Filter Illustrated  
**Note 2:** Use 2 inch drain header for filters with one rinse valve  
 Use 3 inch drain header for filters with two rinse valves  
 Use 4 inch drain header for filters with three rinse valves



9	1/2" Drain Line	Customer Supplied
8	Drain Header	See Note 2
7	2 Inch Drain Line	Customer Supplied
6	Rinse Valve	Quantity Varies with Filter
5	OMNITROL Controller	Remote Mounted
4	2-Way Solenoid Valve	24 V, 60 Hz, Normally Closed
3	Differential Pressure Switch	Preset to 7 psi - increasing
2	Outlet Isolation Valve	Customer Supplied
1	Inlet Isolation Valve	Customer Supplied
No.	Description	Notes

DWG. NO. 1019	SCALE: NONE	<b>ORIVAL, INC.</b> 213 S. VAN BRUNT ST. ENGLEWOOD, N.J. 07631 TEL (201) 568-3311, FAX (201) 568-1916 www.orival.com filters@orival.com
DRAWN BY: G KALINOWSKI	DATE: 05/26/05	
<b>INSTALLATION LAYOUT FOR A TYPICAL            INLINE FILTER WITHOUT BYPASS</b>		